

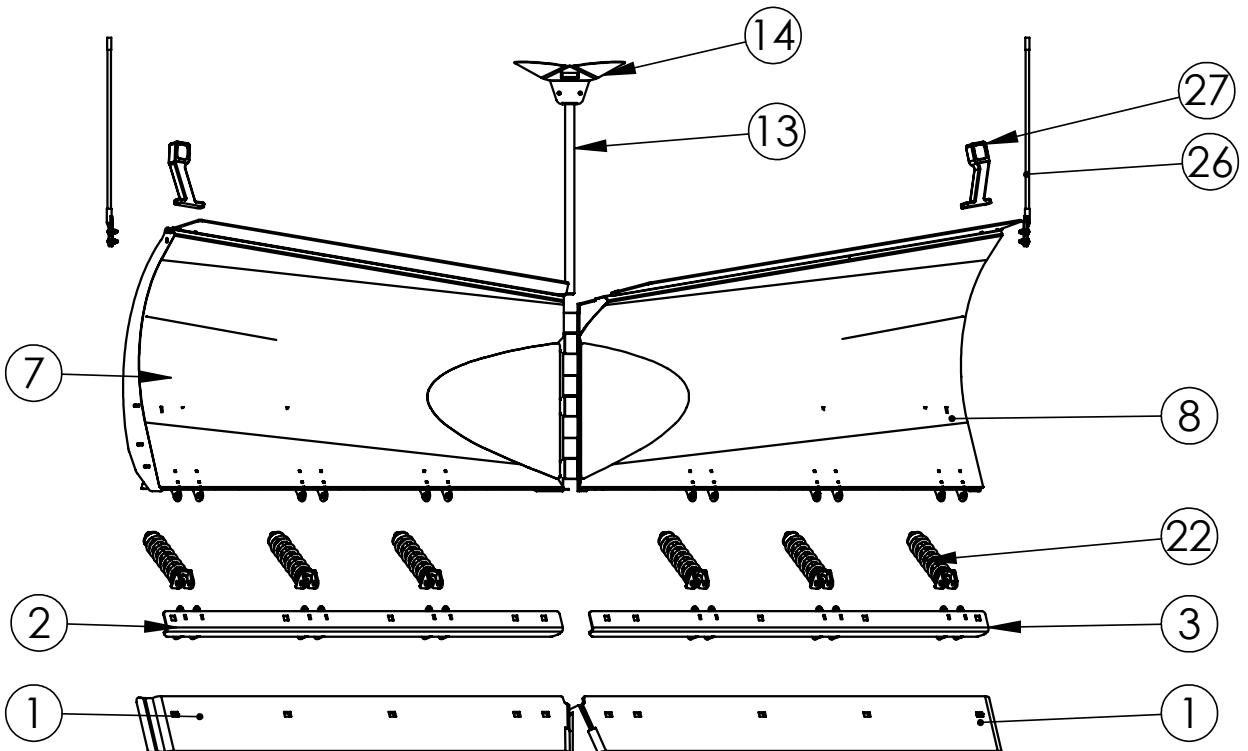
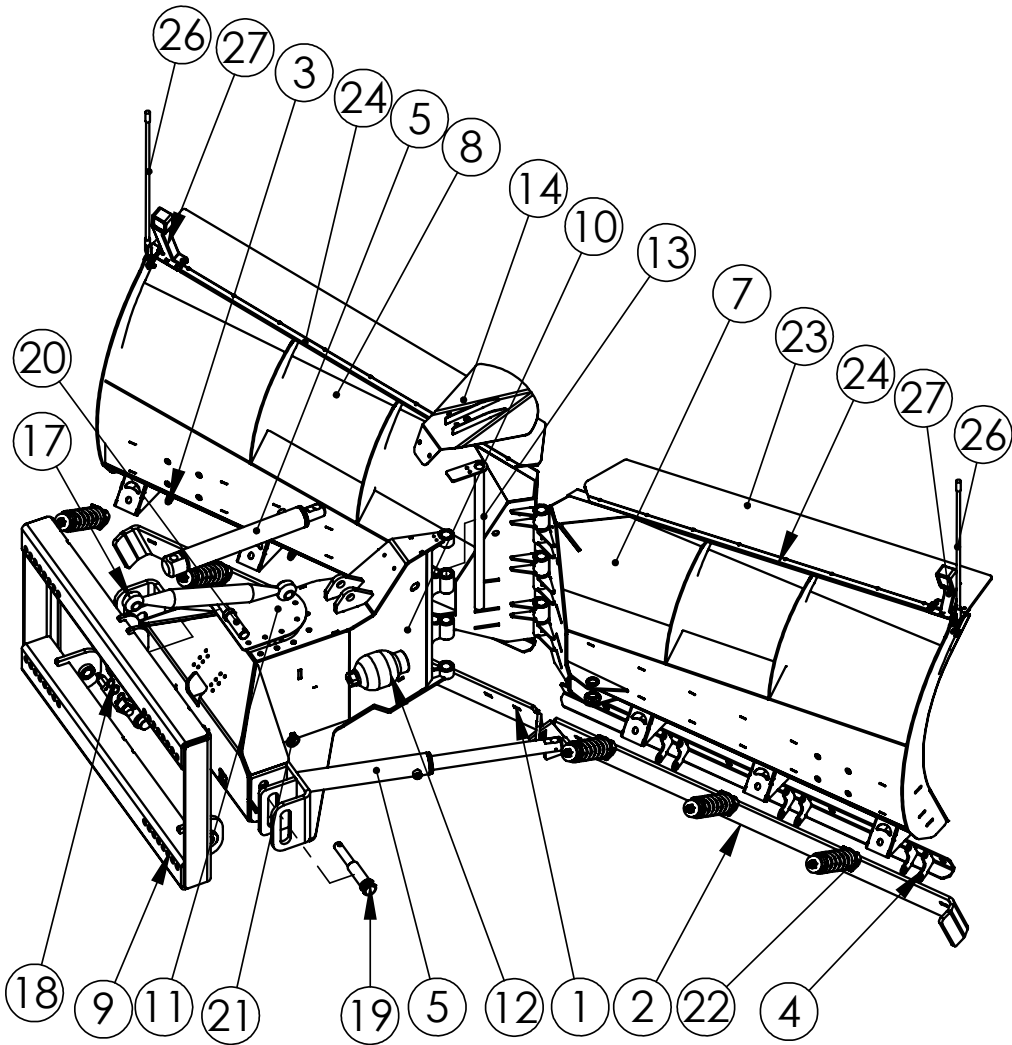


PARTS LIST

2600-3200 VMT V-PLOW

SNOWPLOW ASSEMBLY.....	2
HYDRAULICS.....	4
FRAME.....	5
SPRINGASSEMBLY.....	6
PLOW SHOE ASSEMBLY.....	7
PLOW WHEELASSEMBLY.....	8

SNOWPLOW ASSEMBLY

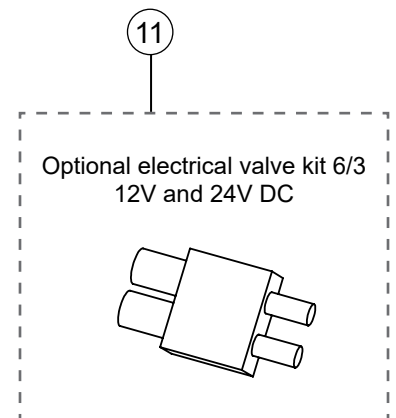
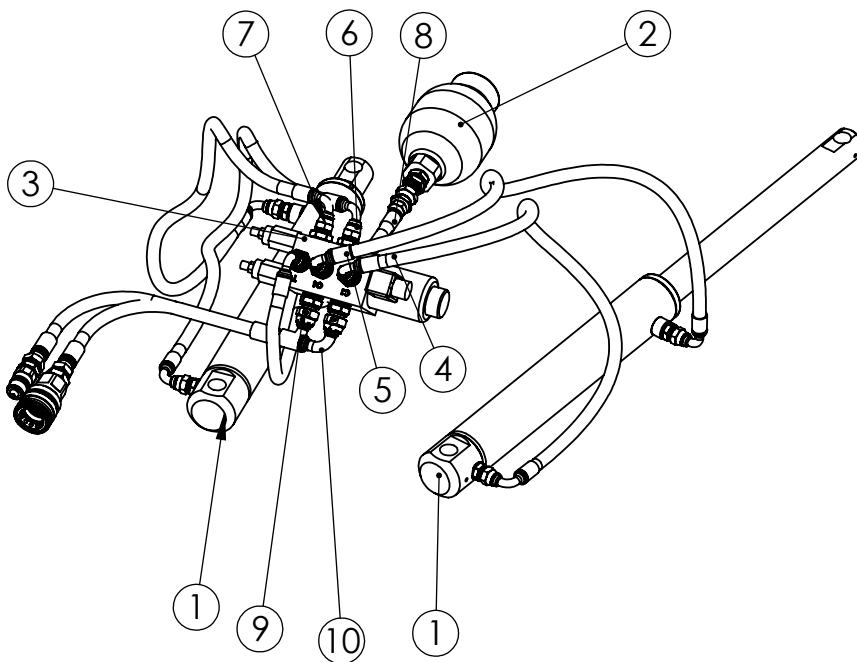


Item	Qty	Part no.	2600 VMT	2900 VMT	3200 VMT	Description	Notes
1	1	*ssm	H42507	H42488	H42508	Steel cutting edge KIT	
	1	*ssm	H42498	H42499	H42500	Polyurethane cutting edge KIT with steel inlay	
3	1	*ssm	H43901	H42465	H43242	Left scraper bracket	
4	1	*ssm	H43902	H42466	H43244	Right scraper bracket	
5	2	H42257				Cylinder	
7	1	*ssm	H43891	H42464	H42464	Right wing	
8	1	*ssm	H43890	H42455	H43230	Left wing	
9	1	H20368				Frame	See page 6
10	1	H44990				VMT frame	See page 5
11	1	HH14784				Bulkhead	
12	1	H20364				Plate	
13	1	H20394				Pressure accumulator 0,75L	
14	1	H42481				Center pin	
15	1	H42484				Deflector bracket	
ns	1	HF12521				Bolt M24x130 DIN 931 8.8 ZN	
ns	1	HF10508				Locknut DIN 985 M24	
17	1	H20051				Top Link 505-750	
18	1	H43946				Electrical valve kit 6/2 12VDC (two pressure lines)	
	1	H43947				Electrical valve kit 6/2 24VDC (two pressure lines)	
	1	H43958				Electrical valve kit 6/3 12V DC (diagonal function)	Optional
	1	H43959				Electrical valve kit 6/3 24VDC (diagonal function)	Optional
19	2	H43803				Lock pin Cat 2/3	
20	1	H26877				Pin	
21	1	H22113				Locking pin	
22	6	H25588				Spring assembly	See page 7
23	1	*ssm	H42503	H42504	H42505	Snow deflector KIT	
24	2	*ssm	H43317	H42487	H43247	Snow deflector bracket	
26	2	H25965				Plow blade marker with bolts KIT	
27	1	H24420				Position light KIT	

*ssm = see specific model, ns = not shown

HYDRAULICS

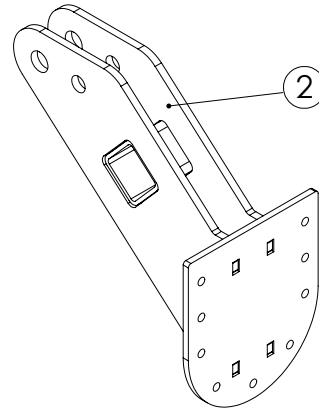
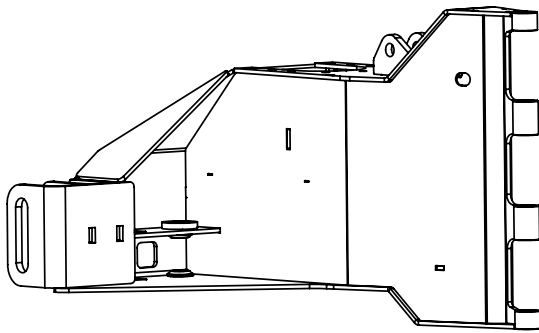
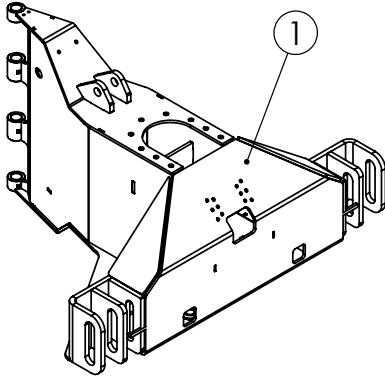
Item	Qty	Part no.	Description	Notes
1	2	H42257	Cylinder	
2	1	H20394	Pressure accumulator 0,75L	
3	1	H43946	Electrical valve kit 6/2 12VDC (two pressure lines)	
	1	H43947	Electrical valve kit 6/2 24VDC (two pressure lines)	
4	1	H46260	VMT Hose assembly R+	
5	1	H46260	VMT Hose assembly R-	
6	1	H46262	VMT Hose assembly L+	
7	1	H46262	VMT Hose assembly L-	
8	1	H46264	VMT Hose assembly pressure accumulator	
9	1	H46265	VMT Hose assembly P	
10	1	H46266	VMT Hose assembly T	
11	1	H43958	Electrical valve kit 6/3 12V DC (diagonal function)	Optional
	1	H43959	Electrical valve kit 6/3 24VDC (diagonal function)	Optional



FRAME

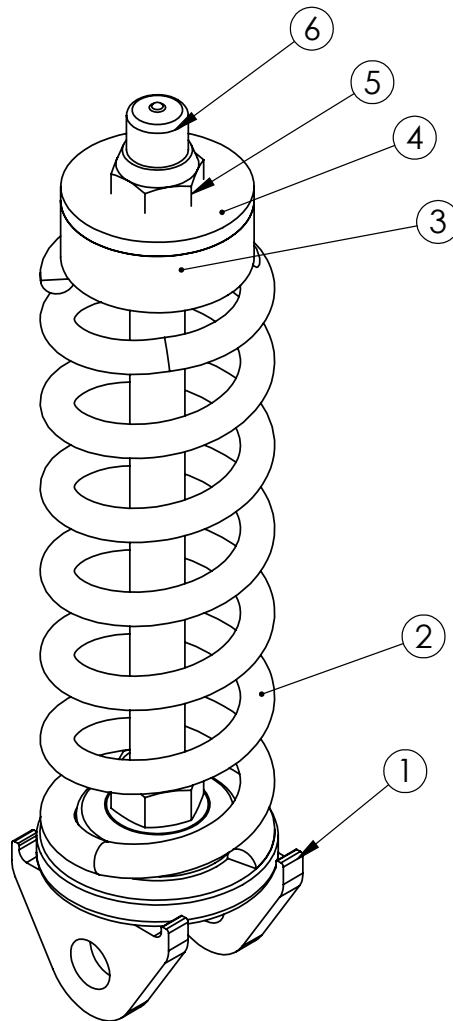
Item	Qty	Part no.	Description
1	1	H44990	VMT Frame
2	1	H43951	Bracket for 3-point mounting

ns = not shown



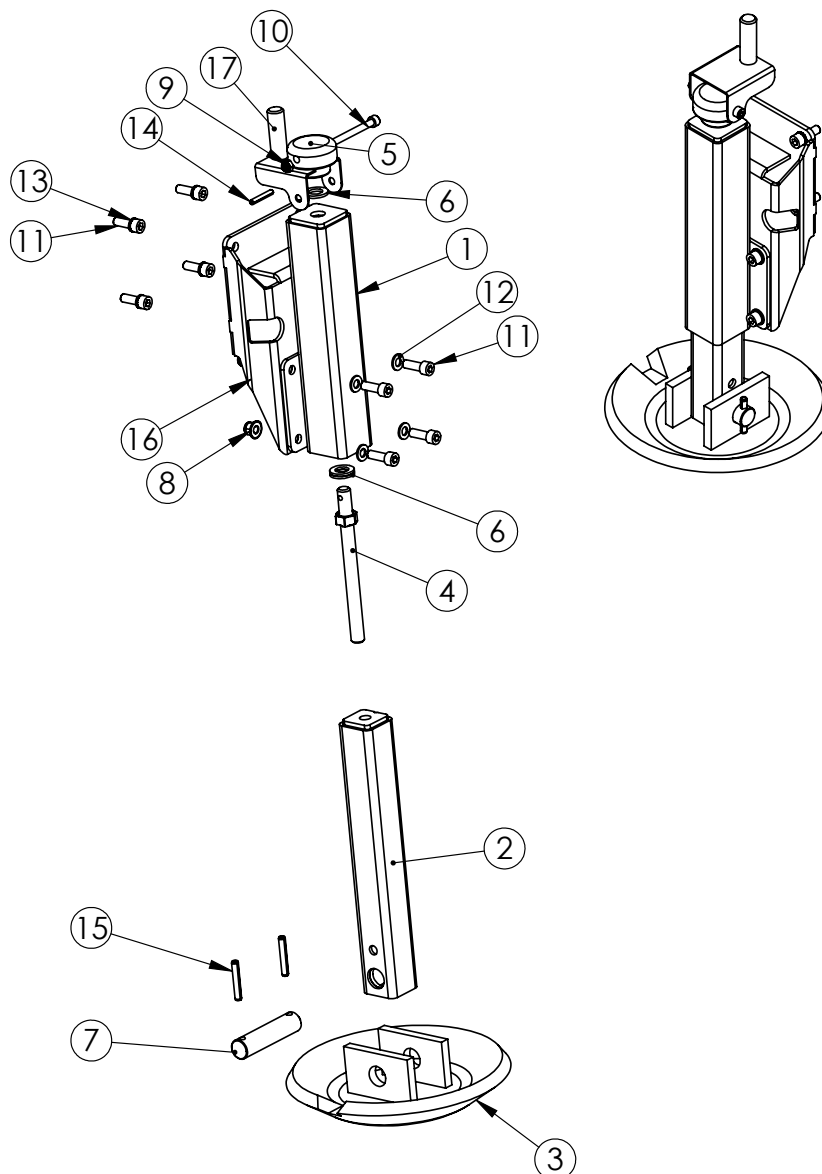
SPRING ASSEMBLY - H25588

Item	Qty	Part no.	Description
1	1	H25587	Spring bracket preassembled
2	1	H46174	Compression spring 10x48x230
3	1	H28645	Spring dampener PUR
4	1	HF15321	Washer DIN 440 ZN M16
5	1	HF15074	Lock nut DIN985 ZN M16
6	1	H25590	Flexicap 16mm



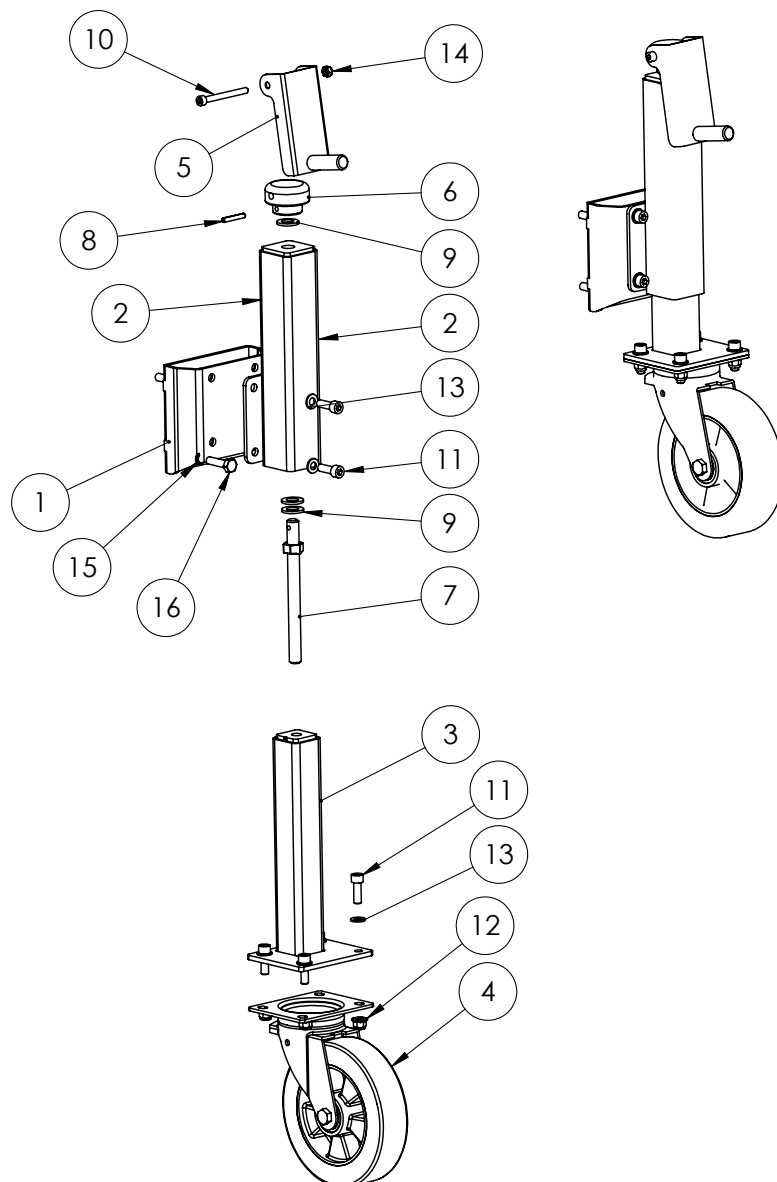
PLOW SHOE ASSEMBLY - H42493

Item	Qty	Part no.	Description
1	1	H25778	Outer pipe
2	1	H25781	Inner pipe
3	1	H20799	270mm wear shoe
4	1	H25788	Adjustment Bar
5	1	H25793	Top nut
6	3	HF15130	DIN 125 M16 ZN
7	1	H25792	Pin Ø25-105
8	4	HF15370	Nut DIN 6926 m10x1,5 Zn 8
9	1	HF15100	Lock nut DIN985 8,8Zn M8
10	1	HF12200	DIN 912 8.8Zn M8x80
11	8	HF12017	Bolt DIN912 8.8ZN M10x30
12	4	HF15127	Washer DIN 125 M10
13	4	HF15213	Nord-lock M10
14	1	HF16413	Spring pin DIN 1481 6x40
15	2	HF16180	Spring pin DIN 1481 8x50
16	1	H42490	Plow shoe distance bracket
17	1	H42495	Handle short



PLOW WHEEL ASSEMBLY - H43268

Item	Qty	Part no.	Description
1	1	H43265	Plow wheel distance bracket
2	1	H25778	Outer pipe
3	1	H25785	Inner pipe for wheel
4	1	H25805	Wheel 200mm
5	1	H25790	Handle
6	1	H25793	Top nut Ø60-40
7	1	H25788	Adjustment Bar
8	1	HF16413	Spring pin DIN 1481 6x40
9	3	HF15130	DIN 125 M16 ZN
10	1	HF12200	DIN 912 8.8Zn M8x80
11	8	HF12017	Bolt DIN912 8.8ZN M10x30
12	8	HF15370	Nut DIN 6926 m10x1,5 Zn 8
13	8	HF15127	Washer DIN 125 M10
14	1	HF15100	Lock nut DIN985 8,8Zn M8
15	4	HF15213	Nord-lock M10 Nord-lock M10
16	4	HF12655	Bolt M10x40 DIN933





Oy Hilltip Ab
Pukkisaarentie 6
68600 Pietarsaari
Finland

www.hilltip.com
info@hilltip.com